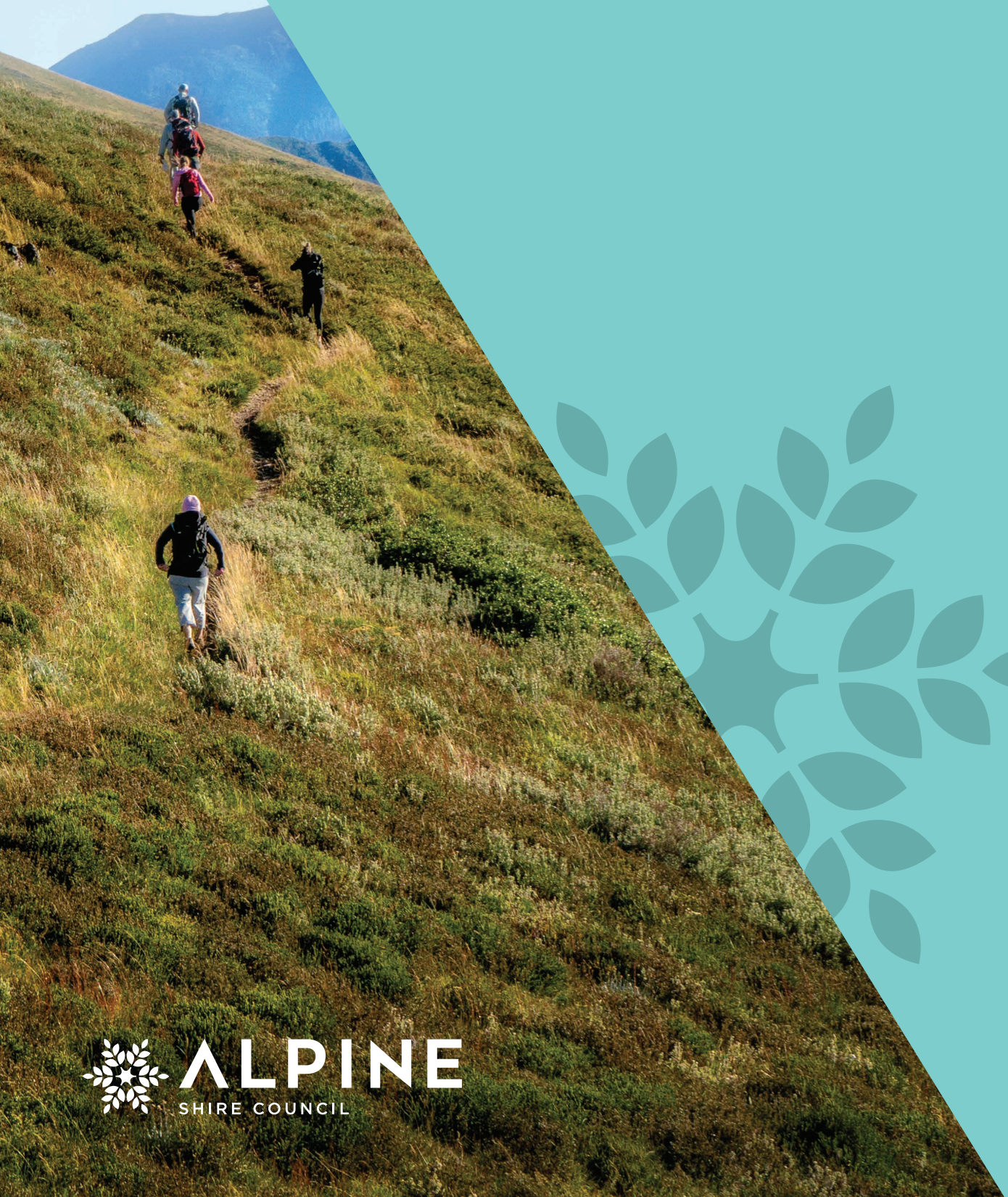


Alpine Shire Residents' Guide



Acknowledgement of Traditional Custodians

Alpine Shire Council acknowledges the Dhudhuroa, Gunaikurnai, Jaithmathang Taungurung and Waywurru as the First Peoples and Traditional Custodians of the Alpine Shire.

We pay our respect to their Elders, past, present and emerging.

The Alpine peaks and high plains within the Alpine Shire comprise the central location where traditional lands belonging to each of its First Peoples meet up.

The Alps are traditionally of great cultural and spiritual significance to our Shire's First Peoples. The Alps marked the central point where it was believed the sky was held up by wooden pillars carefully maintained by supernatural beings.

They were also home to spiritual elders living in stone houses, who dedicated themselves to ceremonial song-making and storytelling.

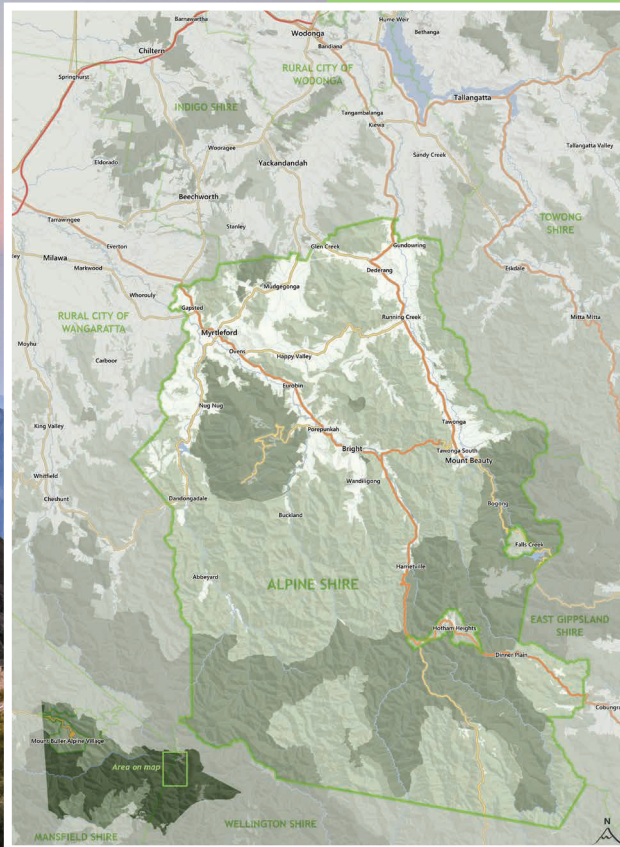
Each summer, the Alps were an important site for harvesting and feasting on Bogong moths.

The First Peoples of the Alpine Shire possessed a deeply-held spiritual belief that the world was created by ancestral beings, the signs of which could be seen all around.

They saw themselves as active participants in ongoing ancestral processes, in a world that was one interconnected whole and in which the past, present and future were bound together.

Today, Alpine Shire Council recognises the ancient and ongoing presence of its First Peoples and acknowledges their unique and continuing connection to the lands, waters and culture of the Shire.

Welcome



Contents

01 Construction and Development	3
02 Enrol to Vote	4
03 Rates	5
04 Emergencies	6
05 Pets	10
06 Tourism and Events	11
07 Business	12
08 Waste and Recycling	13
09 Health	15
10 Maternal and Child Health Services	16
11 Families	17
12 Children's Services	18
13 Youth Services	19
14 Sport and Recreation	20
15 Council and Community Services	21
16 Places of Interest	22

The Alpine Shire is located in northeast Victoria and covers 4839 square kilometres, incorporating the Kiewa and Ovens Valleys and Dinner Plain.

Approximately 92 percent is public land, including the Mount Buffalo National Park, Alpine National Park and many smaller state forests and crown land. We surround the two major ski resorts of Hotham and Falls Creek, and we're home to the highest freehold land in Australia: Dinner Plain.

Providing more than 70 services to residents, Alpine Shire Council prides itself on its core values of accountability, leadership, productivity, integrity, nurturing and engagement.

Contact us

☎ (03) 5755 0555

@ info@alpineshire.vic.gov.au

🖱 alpineshire.vic.gov.au

📘 Find us on Facebook
@alpineshirecouncil

Alpine Shire Council Customer Service Centres

📍 **Bright Council Office**
2 Churchill Avenue

📍 **Myrtleford Library**
Cnr Standish St
and O'Donnell Ave

📍 **Mount Beauty Library**
Lakeside Avenue

Construction and Development

> Planning
> Building

An Online Property Report

Available for any address within the Alpine Shire. The report will contain information for all legal titles associated with the address that is entered.

- > Parcel information
- > Government information
- > Utility information
- > Waste information, including collection days
- > Planning and Building information, including overlays and planning zones

To create your report [click here](#)

Development Obligations

Before you buy a property, make sure you have a conversation with the building and planning department. The Statutory Planning Department is responsible for assessing planning applications against the requirements of the Alpine Planning Scheme.

The Scheme indicates if a planning permit is required to change land use, construct a building or make other changes to land such as earthworks.

For more info

Your Council Contact
Statutory Planning Team
(03) 5755 0555

Building

The Building Department is responsible for permitting most types of construction. You can contact a Building Surveyor to learn about your construction requirements.

For more info

Your Council Contact
The Building Team
(03) 5755 0555

Enrol to Vote

Make sure you have a say in shaping our community by updating your address details on the Australian electoral roll.

Follow the link to change your address:

www.aec.gov.au/enrol/update-my-details.htm

Federal Representative

The Alpine Shire is part of the Federal Electoral Division of Indi. We are represented by Independent Member Dr Helen Haines.

helenhaines.org

State Representative

The state elections are held every four years on the last Saturday of November. The Alpine Shire townships fall into the Electorate of the Ovens Valley. Our state representative is Tim McCurdy.

timmccurdy.com.au

Local Council

Alpine Shire Council is here to meet the needs of the local community. Visit our website to learn more and to meet the seven councillors who represent you.

alpineshire.vic.gov.au

Below is an indication of delegation within levels of government

FEDERAL	STATE	LOCAL
Defence	Schools	Rubbish Collection
Income Tax	Hospitals	Parks
Immigration	Public Transport	Libraries
Social Welfare	Electricity	Local Roads
External Affairs	Police and Ambulance	Pet Registration

Rates

- > Instalment Dates
- > How to Pay



Instalment dates:

1ST INSTALMENT
30 September

2ND INSTALMENT
30 November

3RD INSTALMENT
28 February

4TH INSTALMENT
31 May

- > Reminder notices will be sent via post prior to each instalment due date, reducing the potential for overlooking payment
- > Late or overdue payments will incur interest charges

For more info

Your Council Contact
Customer Service
(03) 5755 0555

Financial Hardship

If you are having or expecting trouble paying your rates our staff can help you to work out a payment plan and provide confidential advice.

Single Farm Enterprise

Where multiple parcels of land are used to operate a Single Farm Enterprise (SFE), you may only be required to pay the fixed charge once by applying for the SFE exemption.

Concessions

Holders of a valid Pensioner Concession Card may be eligible for a concession on the rates of their principal place of residence. To apply for a rates concession, you must present your Pensioner Concession Card to Alpine Shire Council.

Fire Services Levy

Check the [State Revenue Office](#) for information on the Levy and how it is calculated.

How can I pay my rates?

Payment details are on your rates notice

- BPay
- Credit card payment online
- Post Office – please take your rates notice to the Post Office
- In person – cash, cheque or EFTPOS at any Alpine Shire branch
- By mail – post to Alpine Shire Council
PO Box 139
Bright, Victoria, 3741

Check the Alpine Shire Council website for more information on [rates and valuations](#).

> Before, During
and After

Emergencies

Emergency Contacts

In the event of an emergency, always dial

000

This will direct you to
**Ambulance, Fire and
Police**

For storm and
flood assistance,
call the **SES** on

132 500

**Bright Hospital
(03) 5755 0100**

**Mount Beauty Hospital
(03) 5754 3500**

**Myrtleford Hospital
(03) 5751 9300**

Visit **Emergency
Management Victoria's**
website emv.vic.gov.au
to learn more about
what to do during and
after an emergency.

**Alpine Shire Council
(03) 5755 0555**

Including urgent issues
with Council outside
normal working hours.

Planning for an emergency

The Alpine Shire experiences floods, fires, storms, heatwaves, road incidents, earthquakes and other emergencies.

The State Emergency Management Plan (**SEMP**) recognises that building safer and more resilient communities is the shared responsibility of all Victorians, not just the Emergency Management (EM) sector.

Expectations of community members include having a home emergency kit, a personal emergency plan, staying informed and being self-sufficient for a defined period, e.g. up to 72 hours. (refer to p. 10 of the SEMP)

We work with the government, agencies and our community to minimise the impact of all emergencies in the Alpine Shire. The Alpine Shire Municipal Emergency Management Plan (**MEMP**) documents arrangements at a local level.

Personal Planning Tool

There are tools for planning for fire, flood, storms and any other emergency.

Your emergency kit should always be packed and ready to go! Don't forget to plan

for the safety of your pets, and check to see if your neighbours have a plan.

Red Cross: Redi Plan

State Emergency Service: Emergency Toolkit

CFA: Your Guide to Property Preparation

CFA: Bushfire Survival Plan

CFA: What to take with you

Health.vic: Extreme Heat

Agriculture Victoria: Bushfire factsheets and resources

Alpine Shire: For further information, contact the Emergency Management Coordinator at em@alpineshire.vic.gov.au

Community Planning

Some communities have resilience and emergency planning groups. To find your closest local planning group, please contact Council.

Council has worked with communities to produce Community Profiles to support community planning.

During an emergency, tune into emergency broadcasts

Alpine Radio

92.9FM Ovens Valley

94.5FM Harrietville

96.5FM Kiewa Valley

ABC Local

91.7FM Myrtleford

89.7FM Bright

106.5FM Kiewa Valley

In the event of an emergency, always dial

000

This will direct you to Ambulance, Fire and Police

For storm and flood assistance, call the SES on

132 500

CFA

ABC Radio

Alpine Radio

Sky and local news channels

Commercial and designated radio stations

Vic Emergency hotline on 1800 226 226

VicRoads 131171

Preparing for an emergency

Burning off

The Alpine Shire is in a designated fire-prone area. Landholders have responsibilities under the CFA Act to ensure their properties are compliant through the fire danger period. For further information, refer to the [Fire Prevention Notice](#).

All burns should be registered with the CFA to make sure you have the right conditions to burn. Register your burn off on the [Fire Permits Victoria website](#) or call **1800 668 511**

For more information on how to prepare, visit the [CFA website](#).

Check on your neighbours

Do your neighbours need assistance in getting their yard cleaned up and gutters cleared? Offering assistance in the spring is a good way to forge relationships and keep both your own and their place safe.

Stay informed

Stay up-to-date with weather warnings at least three days ahead so you can be ready to put your emergency plan into place.

Upload the [Vic Emergency App](#) on your phone and set up your own watch zone information.

During an emergency

In an emergency, put your plan into place.

If you plan to leave, leave early and know where you are going.

This may include:

- Checking on your neighbours
- Notifying someone you are leaving
- Wherever possible, making arrangements for companion animals ahead of time e.g. with friends or family outside the affected area or at a boarding facility
- Reassessing the options in your plan in case one fails

Going to family and friends in a safe place is often better than attending an Emergency Relief Centre. It may be more comfortable and offer greater support.

Stay informed

In an emergency, it is essential to stay aware, keep informed and be up to date.

Check the [Vic Emergency website](#) or app for latest up to date information.

Always use more than one reputable source for warnings.

Bushfire Places of Last Resort - BPLR

Residents must be aware that Bushfire Places of Last Resort provides shelter during the passage of a fire when all other personal survival plans have failed.

No place is safe in a bushfire. BPLRs offer better protection from bushfires but should not be considered places to relocate when leaving early. Safety and survival cannot be guaranteed at these sites and support services will not be available. These locations will only offer minimum protection against radiant heat and embers but cannot guarantee your survival.

There are NINE locations in the Alpine Shire in the event of a bushfire.

TOWN	PLACE OF LAST RESORT
Bright and Wandiligong	Pioneer Park Recreation Reserve oval
Dederang	Dederang Recreation Memorial Hall
Harrietville	Harrietville Hall
Mount Beauty	Mount Beauty Sports Stadium
Myrtleford	Ablett Pavilion RC McNamara Reserve oval
Porepunkah	Porepunkah Hall Porepunkah Recreation Reserve oval
Tawonga	Tawonga Memorial Hall

What is an Emergency Relief Centre (ERC)?

Emergency Relief Centres are established to provide basic needs for people displaced and/or impacted by an emergency event. They are established on a short-term basis to provide temporary shelter, food, registration, and related relief assistance.

Emergency Relief Centres may not open for every event.

The location of a Emergency Relief Centre is only advertised to the community after all details of the emergency are known.

Where possible, the community is encouraged in the first instance to seek accommodation with family and friends, as this may be a better option during an emergency as a relief centre may be crowded, noisy, hot or cold.

Animals at an Emergency Relief Centre

- > There may only be minimal provision for animals at an Emergency Relief Centre. All animals **MUST** be under the control of their owner and confined to a cage or leash at all times.
- > Where possible, Council will assist in providing short-term relocation of livestock and horses.

After an emergency

Council ensures effective arrangements are in place with supporting agencies to assist individuals and communities impacted by an emergency. We respond by providing relief and coordinating the short, medium and long-term recovery efforts.

Recovery

During a significant emergency, you can find relief and recovery information on the [Vic Emergency Relief and Recovery](#) webpage and the [Council website](#) and [Facebook page](#).

A recovery centre may open following a major emergency only after the immediate danger has passed. They are usually located within the affected community or town to provide a place where impacted individuals can go to access information and support services to aid their recovery from the emergency.

This may include:

- Insurance
- Accommodation and financial support
- Meeting place for the community to come together and support one another and obtaining information on:
- Support services
- Road closures
- Park closures
- Returning home
- Health and wellbeing
- Water
- Air quality
- Livestock and pets

Community Recovery Committees may be set up to facilitate medium to long term recovery.



Location details will be broadcast in a variety of ways, including:

- > ABC radio
- > Alpine Radio
- > Council website and Facebook page
- > VicEmergency website or the VicEmergency App
- > Wildlife Victoria emergency response line on **(03) 8400 7300** between 6.40 am and 8.30 pm, or report **online**

Check on your neighbours

Mental health agencies:

Alpine Health
(03) 5751 9300

Beyond Blue
1300 224 636

Lifeline Australia
13 11 14

Navspace

Annual Registration

10 April

- > Registration tags must be on your dog or cat collar at all times
- > Failure to register your dog or cat can result in a fine
- > Application forms can be found on **Council's website**. To request an application form for a dog and or cat registration to be mailed to you; please contact Council during business hours

For more info

Your Council Contact
Local Laws Team
(03) 5755 0555

Dogs and cats **over the age of three months** are required to be registered in the Alpine Shire. Prior to registration cats and dogs must also be microchipped.

Registering your pet for the first time?

Visit an Alpine Shire Council branch and your pet will be issued with a lifetime tag.

FEES	DOGS	CATS
Maximum Fee	\$93.50	\$93.50
Reduced Fee	\$31.00	\$31.00
Transfer from another Shire (First year only-proof required)	\$6.00	\$6.00
Maximum Pensioner Fee	\$46.50	\$46.50
Reduced Pensioner Fee	\$15.00	\$15.00

Pension Concession Card holders are eligible for a 50% discount on fees (Health Care Card not eligible).

Reduced fees can apply once an animal is desexed. Proof of sterilisation is required.

Tourism and Events

- > What's On
- > Holding an Event
- > Visitor Information Centres



Tourism

Tourism is one of the key drivers of our economy. Visit our tourism site: visitbrightandsurrounds.com.au

Facebook
/brightandsurrounds

Twitter
@brightsurrounds

Youtube
Bright & Surrounds

Instagram
@brightandsurrounds

#brightandsurrounds
#mountbeauty
#harrietville
#myrtleford
#dinnerplain

For statistical information to assist you in making decisions visit **Council's website** for up-to-date industry analysis and profiling.

The Alpine Shire has a diverse year-round calendar of events.

Visit our web pages to discover more about what each township has to offer.

Brochures can be downloaded from our tourism websites.

Tourism Websites

Bright
visitbright.com.au

Dinner Plain
visitdinnerplain.com.au

Harrietville
visitharrietville.com.au

Mount Beauty
visitmountbeauty.com.au

Myrtleford
visitmyrtlefordvic.com.au

If you're interested in running a festival or event check out **Council's website**.

Visitor Information Centres

Alpine Visitor Information Centre, Bright

119 Gavan Street, Bright
(03) 5755 0584/1800 111 885
alpinevic@alpineshire.vic.gov.au

Mount Beauty Visitor Information Centre

31 Bogong High Plains Road, Mount Beauty
(03) 5755 0596/1800 111 885
mtbeautyvic@alpineshire.vic.gov.au

The Mount Beauty Visitor Information Centre has a wonderful little museum that is worth a visit in its own right.

Myrtleford Visitor Information Centre

Post Office Complex, Great Alpine Road, Myrtleford
(03) 5755 0514
myrtlefordvic@alpineshire.vic.gov.au

For more info

Your Council Contact

Development Officer (Tourism)
(03) 5755 0555

Business



Business

Looking to own and operate a business in the Alpine Shire? We have a number of resources to assist you in making informed decisions.

Start Here

We have an online profiling resource for our community and economy.

- To learn more, visit our [community profile pages](#)

Our economy

Our economy is diverse, employing a whole host of people in a number of industries.

- To learn more, visit our [economic profile pages](#)

If you would like to start a new business, buy an existing business or organise an event within the Alpine Shire, you may need a permit.

Contact Council and speak with our Business Concierge. They will help you become operational as quickly as possible by assisting you to:

- Apply for your business permits
- Connecting you with different Council departments
- Provide information on available grants
- Connect you with industry groups

Visit Council's website for [Business Support Information](#)

For more info

Your Council Contact
Business Concierge
(03) 5755 0555

Waste and Recycling

> Transfer Stations



REUSE
REDUCE
RECYCLE

A key responsibility for Alpine Shire Council is the management of waste.

Domestic recycling is collected fortnightly.

To find out when your bin is scheduled to be picked up visit **Council's website**.

THIS IS ACHIEVED
THROUGH A NUMBER
OF INITIATIVES

- > kerbside pruning collection
- > recycling and waste services
- > farm waste disposal information
- > e-waste
- > printer cartridges and mobile phones collection points
- > household batteries
- > domestic waste is collected weekly (urban areas only)

The service charges are as follows:

TYPE OF SERVICE	COST [PER ANNUM]	FREQUENCY
Recycling		
240 litre bin	\$107.00	Fortnightly collection
360 litre bin	\$113.07	Fortnightly collection
Domestic waste (Domestic waste is collected weekly for urban properties and fortnightly for rural properties.)		
80 litre bin	\$231.30	Weekly collection
240 litre bin	\$512.24	Weekly collection
240 litre bin	\$231.30	Fortnightly collection

For more info

Your Council Contact
Waste Officer
(03) 5755 0555



Kerbside Pruning Collection

Council offers an annual kerbside collection of garden prunings from residents' nature strips. All prunings collected are chipped and made available free to residents as mulch.

COLLECTION DATE
Month of July

Keep an eye on Council's [website](#) and [Facebook page](#) for up-to-date information.

Free mulch collection points

Myrtleford

Entrance to Showgrounds near Golf Club

Bright

Coronation Avenue, football ground and Pony Club

Mount Beauty

Embankment Drive, opposite Shire Depot

Porepunkah

Riverside Park Disposal Facilities

Council operates three transfer stations with recycling facilities available at each site.

Disposal of asbestos

Restrictions and conditions apply. Waste is only accepted at the Porepunkah facility and prior bookings must be made with the attendant at the Porepunkah facility.

Disposal facility locations and opening times

FACILITY	ADDRESS & PHONE	OPENING TIMES
Myrtleford Transfer Station	Morrison Lane Myrtleford 0436 414 353	Tuesday, Thursday, Saturday, Sunday 10am - 3pm
Porepunkah Transfer Station	Roberts Creek Rd Porepunkah 0418 396 122	Wednesday, Friday Saturday, Sunday 10am - 2pm
Mount Beauty Transfer Station	Maddison Lane Mount Beauty 0448 514 064	Tuesday, Thursday, Saturday, Sunday 10am - 2pm

For more info

Your Council Contact
Waste Officer
(03) 5755 0555

Health

> Alpine Shire
Health Services



THE KEY AREAS OF DELIVERY ARE:

- > Acute health
- > Mental health
- > Adolescent health
- > Community health
- > Community residential services
- > Aged care residential services
- > Respite care
- > Health promotion and education
- > Home care

For more info

Your Council Contact
Alpine Community Health
(03) 5755 0123

**In case of an emergency
please call 000**

Health services are delivered by Alpine Health who provide a multi-purpose service in the three major townships of Bright, Myrtleford and Mount Beauty.

ALPINE HEALTH MYRTLEFORD

Hospital 30 O'Donnell Avenue, Myrtleford	(03) 5751 9300
Standish Street Surgery	(03) 5751 9900
Alba Health Family practice physician	(02) 6049 0732
Barwidgee Lodge Aged Care	(03) 5751 9335
Alliance Dental Group	(03) 5752 2675
Great Alpine Dental	(03) 5752 2221
Alpine Health Administration	(03) 5751 9344

ALPINE HEALTH BRIGHT

Hospital 32-36 Cobden Street, Bright	(03) 5755 0100
Bright Medical Centre	(03) 5750 1000
Alliance Dental Group	(03) 5755 1776
Hawthorn Village Aged Care	(03) 5755 0150
Alpine Community Health	(03) 5755 0123

ALPINE HEALTH MOUNT BEAUTY

Hospital 2-8 Hollonds Street, Mount Beauty	(03) 5754 3500
Kiewa Valley House Aged Care	(03) 5754 3521
Mount Beauty Medical Centre	(03) 5754 3400
Alpine Leisure Group	(03) 5754 3530

ANGEL FLIGHT

Provides free flights for non-emergency medical appointments/treatment. Contact them on **1300 726 567**.

Maternal and Child Health Services

The Universal Maternal Child Health (MCH) service delivers a free service for all families with young children from birth to school age.

The service provides assistance with:

- Breastfeeding
- Health and development
- Maternal health and wellbeing, including adjustment to parenthood and postnatal depression
- Parent/child relationships
- Family planning
- Nutrition
- Immunisation
- Parenting and social support, including first time parents groups
- Childhood illness
- Safety

Alpine Shire Council provides a range of services for families including Maternal & Child Health services for children 0-5 years and their parents, Storytime, and Rhyme Time at our libraries. Council does not provide Playgroups, Toy Library or Childcare services. These are all provided by other groups or organisations.

Maternal and Child Health Services:

NAME	ADDRESS & PHONE	OPENING TIMES
Mountain View Children's Centre	55 Prince Street Myrtleford (03) 5751 1959 by appointment	Monday and Wednesday 9am to 4pm
Alpine View Children's Centre	23 Deacon Avenue Bright (03) 5755 5101 by appointment	Tuesdays 9am to 4pm
Lakeview Children's Centre	Reserve Drive Mount Beauty (03) 5754 4734 by appointment	Thursdays 9am to 3pm

> MCH mobile **0417 147 120**

> For more information on activities for toddlers and pre-schoolers visit:
Council's website

How do I get in contact?

Notification from the hospital of a birth in the Alpine Shire is communicated to the MCH nurse, and contact with the family is made. Regular appointments are scheduled directly with the MCH nurse. New families or visitors to the area can make direct with the MCH service by calling the number listed or calling Customer Service.

For more info

Your Council Contact
Maternal and Child Health Nurse
(03) 5755 0555
0417 147 120

Families

- > Schools
- > Kindergartens
- > Daycare and Playgroup



Toy Library

A place to borrow a large variety of educational toys, puzzles, and games regularly. Save money and significantly contribute towards the development and education of your children.

The Toy Library can help you out with their party hire pack for birthday parties if you are a member.

Bright

Mount Beauty

Myrtleford

Kindergarten services

Bright

Alpine View Children's Centre

Dederang

Kinder and Childcare Program

Myrtleford

Mountain View Childrens' Centre

Mount Beauty

Lake View Children's Centre

Tawonga Kindergarten

Harrietville Bush Kinder

Family Daycare

On hold in 2022.

Schools

The Alpine Shire offers a number of Primary and Secondary Schools.

NAME	PHONE
Bright P-12 College	(03) 5755 1166
Dederang Primary School	(02) 6028 9331
Dinner Plain School (Bright P-12 Annex)	(03) 5755 1166
Falls Creek Primary School	(03) 5758 3311
Harrietville Primary School	(03) 5759 2533
Marian College, Myrtleford	(03) 5752 1596
Mount Beauty Primary School	(03) 5754 4354
Mount Beauty Secondary College	(03) 5754 4005
Myrtleford P-12 College	(03) 5752 1174
Porepunkah Primary School	(03) 5756 2253
St Mary's Primary School, Myrtleford	(03) 5752 1808
Tawonga Primary School	(03) 5754 4468
Wandiligong Primary School	(03) 5755 1026

For more information on education: www.education.vic.gov.au

Playgroups

Aimed at children 0-5 years, playgroup is an opportunity to meet new people, gain support and exchange parenting ideas. Groups allow babies, toddlers and pre-schoolers to socialise through play and learn together. To find out more about playgroup, visit Playgroup Victoria.

For more info

Your Council Contact
Alpine Children's Services
(03) 5750 1367

Children's Services

- > Kindergarten and Daycare
- > Free Immunisations

Alpine children's services include:

PROGRAM	SERVICE	CONTACT
Home Based Child Care	Alpine Family Daycare - On hold in 2022	(03) 5750 1367
Kindergarten and Long Day Care	Alpine View Children's Centre Bright 23 Deacon Avenue, Bright	(03) 5750 1367
Kindergarten and Long Day Care	Lake View Children's Centre Mount Beauty Reserve Drive, Mount Beauty	(03) 5754 4848
Kindergarten and Long Day Care	Mountain View Children's Centre Myrtleford 51 Prince Street, Myrtleford	(03) 5752 2111
After School Care and Vacation Care	Myrtleford Outside School Hours Care 43 O'Donnell Avenue, Myrtleford	(03) 5752 2111
After School Care and Vacation Care	Bright Outside School Hours Care 23 Deacon Avenue, Bright	(03) 5750 1367
After School Care and Vacation Care	Mount Beauty Outside School Hours Care Mount Beauty Primary School	0407 336 403
After School Care and Vacation Care	Tawonga Outside School Hours Care Tawonga Primary School	0429 018 724
After School Care and Vacation Care	Dederang Outside School Hours Care Dederang Primary School	0437 009 591

- > Kindergarten and daycare services for children of the Alpine Shire aged between 0-6 years are provided by a not-for-profit organisation.

Free Immunisations

Council runs immunisation clinics monthly at the alternate venues of Myrtleford, Bright and Mount Beauty. Standard childhood vaccines are free, as are some vaccines for adults. Accredited nurses administer all vaccines. Parents are invited to attend any Council session to receive vaccinations.

- Please bring your Medicare card and your child's health record book
- The immunisation schedule is on the [Council website](#)
- For more information, contact Customer Service

Children's Services

Educators are a team of early childhood professionals committed to providing quality care and education in the Alpine Shire.

Visit alpinechildrensservices.asn.au for further information.

For more info

Your Council Contact
Alpine Children's Services
(03) 5750 1367

Youth Services

- > TAC L2P Program
- > Youth Awards
- > Youth Events



TAC L2P program

Alpine Shire Council supports young learner drivers to get the 120 hours of driving experience required to apply for a probationary licence. The TAC L2P Program assists disadvantaged Victorian learner drivers aged 16 to 21 with no access to a supervising driver or vehicle by matching learners with a fully-licensed volunteer driver and practice vehicle to help them gain driving experience. Learner drivers participating in the program have access to up to seven free driving lessons with a professional instructor throughout the program.

Who is eligible for the TAC L2P Program?

Learner drivers need to meet the following criteria to join the **TAC L2P program**:

- be between 16 and 21 years old
- hold a current learner permit
- have no access to a vehicle or a supervising driver*
- live in the Alpine Shire

*Applications outside of the standard criteria will also be considered. Please contact your L2P Coordinator for further information.

How do learner drivers apply for the TAC L2P Program?

Learner drivers (or their parent or guardian) need to

read the Learner Handbook and complete a learner driver application form, both available on Council's [website](#).

How can a fully-licensed driver become a volunteer?

The TAC L2P Program has a full training program available for mentors to ensure that they are well prepared to mentor a learner driver and understand their role as a supervising driver. Mentors must be over 21 years old, hold a current full Victorian driver licence, and commit approximately 1-2 hours per week to the TAC L2P Program (or equivalent).

To apply as a volunteer mentor for the TAC L2P Program, contact the L2P Coordinator by calling **(03) 5755 0555** or emailing **L2P@alpineshire.vic.gov.au**

The TAC L2P Program is funded by the Transport Accident Commission (TAC), managed by the Department of Transport (DoT), supported by the Victorian Government, and coordinated by Council.

Youth Awards

The annual Youth Awards recognise and celebrate the contributions and achievements of young people aged 12-21 years of age who live, work, or study in the Alpine Shire. Nominations are open throughout the year, with the awards taking place in spring. Find out more about the Youth Awards by visiting Council's [website](#).

Youth Events

Young people aged between 12-25 are invited to be involved in the Alpine Shire Youth crew, a volunteer committee that plans and runs events for young people in the Alpine Shire. Committee members come up with the ideas and gain valuable skills that they can apply now and into the future.

The Alpine Shire Youth crew is supported by the FReeZA program, an innovative youth development program run by the Victorian Government that provides opportunities for young Victorians to enjoy cultural, recreational, and artistic events.

Stay up-to-date by following Alpine Shire Youth on [Facebook](#) and [Instagram](#).

For more info

Your Council Contact

Youth Development Officer
(03) 5755 0555
ydo@alpineshire.vic.gov.au

Sport & Recreation

Alpine Walks & Trails

>> [Walking Trails Brochure](#)

Bright Sports Centre and Indoor Pool

47-49 Gavan Street

- 17m indoor heat swimming pool
- Fully equipped gym
- 3 squash courts
- Multipurpose facility hire and birthday party hire
- Learn to Swim Program experienced
- Organised fitness classes
- Hoist for people with a disability enables the only year-round accessible heated swimming pool in the Alpine Shire

For information visit brightsportscentre.com.au or call **(03) 5755 1049**

Bright Splash Park and Waterslide

The Bright Splash Park & Rotary Club Water Slide are located at Centenary Park, where Morses Creek flows into the Ovens River. The Splash Park has a gold mining theme and caters for everyone from toddlers up.

Bright Skate Park

The Bright Skate Park is situated in Lions Park, close to a picnic shelter and across the road from Centenary Park.

For more info

Your Council Contact
Manager Facilities
(03) 5755 0555

Mount Beauty Sports Centre

Pool Road

- Full-size stadium
- Grandstand for 80 people
- Basketball, gymnastics, indoor soccer, cricket training and occasional roller derby training
- 3 outdoor solar heated (seasonal) pools; toddler, intermediate and a 33m main pool
- Organised fitness classes
- Hoist for people with a disability soon to be installed
- Mount Beauty and District Amateur Swimming Club contact mtbeautyswim@gmail.com

For information visit mountbeautypool.com.au or call **(03) 5754 1181** during opening hours.

Mount Beauty Skate Park

Situated by the Mount Beauty pondage off Lakeside Avenue, the Mount Beauty Skate Park is close to toilets, barbecues, seating, Mount Beauty Library and BMX track.

Mount Beauty Mountain Bike Park

Mount Beauty's Big Hill Mountain Bike Park has over 40kms of top quality cross-country and downhill trails suitable for beginner, intermediate and advanced riders.

Myrtleford Swimming Pool

Standish Street

- 3 outdoor solar heated (seasonal); pools; toddler, intermediate and a 25m main pool
- Organised fitness classes
- Hoist for people with a disability soon to be installed
- Myrtleford Amateur Swimming Club contact myrtlefordalpine.swim@gmail.com

For information visit myrtlefordpool.com.au or call **(03) 5752 1381**

Myrtleford Indoor Sports and Leisure Stadium

56/38 O'Donnell Avenue

Full-size stadium for basketball, badminton, squash, soccer, volleyball, netball and lifeball under Myrtleford Indoor Sports and Leisure Stadium

Myrtleford Skate Park

Situated next to the Myrtleford Library in Standish Street, close to Cundy Park Adventure Playground, toilets and barbecues.

River Pools

The Ovens River is dammed at Bright and Porepunkah from around Christmas to Easter to create long, cool river swimming pools. A lifeguard is on duty in the afternoon most days during summer. Take along a barbeque and take advantage of the nearby free BBQ facilities and picnic tables. For information on locations, go to alpineshire.vic.gov.au

Council and Community Services



Libraries

An amazing community resource, our libraries make a multitude of titles available to all members.

Not only an in-house lending service and place to congregate for pre-school activities, Rhyme time and Storytime, but our library service also allows you to read current magazines, ebooks, online and access an online storytelling resource Story Box. The libraries also provide meeting rooms to community groups and businesses, plus free wifi and computer pools.

Our library website has information about services offered, including opening hours and the availability of the Justice of the Peace:

www.hclc.vic.gov.au

> **Bright**
(03) 5755 1540
14 Ireland Street

> **Myrtleford**
(03) 5751 1591
Cnr Standish St
& O'Donnell Ave

> **Mount Beauty**
(03) 5754 4305
61 Lakeside Avenue

To access these resources or to book a meeting facility, head into one of our three locations and sign up to start discovering all we have to offer.

Neighbourhood Centres

Mount Beauty
(03) 5754 1166
info@mountbeauty.org.au
1 Tennis Court Avenue
mountbeauty.org.au

Myrtleford
(03) 5752 2775
themnc@people.net.au
156 Myrtle St

Access to **Electric Scooter RECHARGE points** and **All-Terrain Wheelchair**
[alpineshire.vic.gov.au/
community/accessibility/access](http://alpineshire.vic.gov.au/community/accessibility/access)

Community Halls

To hire a Community Hall and information on facilities and bookings, go to
[alpineshire.vic.gov.au/
community/facilities](http://alpineshire.vic.gov.au/community/facilities)

Mens' Sheds

Myrtleford Mens' Shed
(03) 5752 1361/0419 437 964
[MyrtlefordMensShed@
alpinehealth.org.au](mailto:MyrtlefordMensShed@alpinehealth.org.au)
161 Standish Street

Bright United Mens' Shed (BUMS)

03 5750 1120
info@bumsinc.com.au
14 Churchill Avenue
(in behind the Bowls Club
and the SES)

Mount Beauty Mens' Shed

(03) 5754 4676
[secretary@
mountbeautymensshed.org.au](mailto:secretary@mountbeautymensshed.org.au)
2 Tennis Court Avenue

For more info

Your Council Contact

Customer Service
(03) 5755 0555

Useful links

[Alpine Community Directory](#)

Places of Interest

TOP 6 THINGS TO DO IN

BRIGHT



1. >> [Canyon Walk](#)
2. A market by the river >> [Make It, Bake It, Grow It Market](#)
3. River Pool & Splash Park >> [Bright River Pool & Splash Park](#)
4. >> [Huggins Lookout](#)
5. Rail trail >> [Murray to Mountains Rail Trail](#)
6. Mystic Park >> Go [mountain biking](#) or [paragliding](#)

TOP 6 THINGS TO DO IN

DINNER PLAIN



1. Play on Australia's >> [longest toboggan run](#)
2. Ride the >> [Mountain Bike Park](#)
3. Experience the thrill of >> [dog sledding](#)
4. Experience >> [snow shoeing](#) and [cross-country skiing](#)
5. >> [Take your dog to the snow](#)
6. >> [Hike](#), so many choices

TOP 6 THINGS TO DO IN

HARRIETVILLE



1. >> [Tronoh Dredge Hole](#)
2. Mount Feathertop hike >> [Bungalow Spur Track](#)
3. Experience snow at >> [Mount Hotham](#) and [Dinner Plain](#)
4. >> [Harrietville Museum](#)
5. >> [Great Valley Trail](#)
6. >> [Tavare Park](#)

TOP 6 THINGS TO DO IN

MOUNT BEAUTY



1. >> [Sullivans](#) and [Tawonga Gap Lookouts](#)
2. Skiing & snowboarding at >> [Falls Creek](#)
3. Summit Mount Bogong >> [Mount Bogong](#)
4. Mountain biking at >> [Big Hill Mountain Bike Park](#) and [Falls Creek Mountain Bike Park](#)
5. >> [Mount Beauty Gorge](#)
6. High Country horse riding >> [Horseback Adventures](#)

TOP 6 THINGS TO DO IN

MYRTLEFORD



1. Discover the >> [Mosaic Trail](#) (Ovens River Loop)
2. Hike up >> [Reform Hill](#)
3. Visit >> [Lake Buffalo](#), swim, kayak, fish or water ski in a stunning location with views of Mount Buffalo only 20 minutes from Myrtleford
4. Cycle from Myrtleford to Ovens to enjoy lunch at the [Happy Valley Pub](#), bursting with country hospitality
5. [Nimmo Bridge](#) is the perfect location for a paddle on a hot day
6. Myrtleford is lucky to have great op shops for those looking to fall in love with something pre-loved



Contact us

☎ (03) 5755 0555

@ info@alpineshire.vic.gov.au

🖱 alpineshire.vic.gov.au

📘 Find us on Facebook
@alpineshirecouncil

Alpine Shire Council Customer Service Centres

📍 **Bright Council Office**
2 Churchill Avenue

📍 **Myrtleford Library**
Cnr Standish St
and O'Donnell Ave

📍 **Mount Beauty Library**
Lakeside Avenue